

JUMO GmbH & Co. KG

Delivery address: Mackenrodtstraße 14
36039 Fulda, Germany
Postal address: 36035 Fulda, Germany
Phone: +49 661 6003-0
Fax: +49 661 6003-607
E-mail: mail@jumo.net
Internet: www.jumo.net

JUMO Instrument Co. Ltd.

JUMO House
Temple Bank, Riverway
Harlow, Essex CM20 2DY, UK
Phone: +44 1279 635533
Fax: +44 1279 635262
E-mail: sales@jumo.co.uk
Internet: www.jumo.co.uk

JUMO Process Control, Inc.

8 Technology Boulevard
Canastota, NY 13032, USA
Phone: 315-697-5866
1-800-554-JUMO
Fax: 315-697-5867
E-mail: info@jumo.us
Internet: www.jumo.us

**JUMO VIBROtemp**

Screw-in RTD temperature probes with plug connector

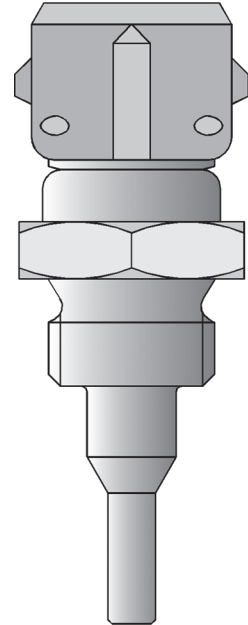
- Temperature range from -50 to +270 °C
- Shakeproof design
- Application areas: utility vehicles, construction and agricultural machinery, motors, compressors and railway technology
- Plug connection locked contact stable, protection type IP67 (IP69K)

Screw-in RTD temperature probes in vibration proof design allow temperature measuring under pressure in utility vehicles, construction and agricultural machinery, motors, compressors and in railway technology.

The plug connectors between the protection fitting and the connection cable are locked contact stable and have the protection type IP67 (IP69K) when connected.

A Pt100 temperature sensing element according to DIN EN 60751, class B, with a 2-wire circuit is used as a measuring insert.

Other possibilities are versions with Pt500 or Pt1000 as well as PTC/NTC temperature sensing elements.



Technical Data

Connection	Basic type 902040/10: AMP plug connector (Junior-Power-Timer) with gold-plated contacts, IP67 when connected Basic type 902040/12: Machine connector M12, IP67 when connected Basic type 902040/15: Bayonet connector according to DIN 72585, IP69K when connected Basic type 902040/17: Bosch compact connector 1.1, IP67 when connected
Process connection	Thread, stainless steel or brass
Protection tube	Stainless steel or brass
Measuring insert	Pt100 temperature probe, DIN EN 60751, class B, 2-wire circuit
Protection type	IP67 (IP69K), when connected
Response times	in water with 0.4 m/s Ø 4 mm: $t_{0,5} = 1.2 \text{ s}$, $t_{0,9} = 6 \text{ s}$
Accessories	Coupling for basic type 902040/10 without or with a 2.5 m long connection cable, silicone-insulated, coupling for basic type 902040/12, 902040/15 and 902040/17, data sheet 909760.

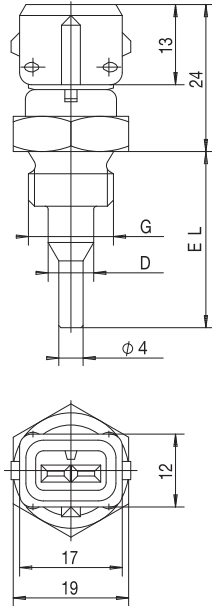
JUMO GmbH & Co. KG
 Delivery address: Mackenrodtstraße 14
 36039 Fulda, Germany
 Postal address: 36035 Fulda, Germany
 Phone: +49 661 6003-0
 Fax: +49 661 6003-607
 E-mail: mail@jumo.net
 Internet: www.jumo.net

JUMO Instrument Co. Ltd.
 JUMO House
 Temple Bank, Riverway
 Harlow, Essex CM20 2DY, UK
 Phone: +44 1279 635533
 Fax: +44 1279 635262
 E-mail: sales@jumo.co.uk
 Internet: www.jumo.co.uk

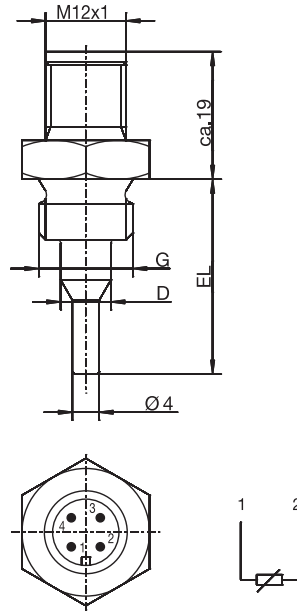
JUMO Process Control, Inc.
 8 Technology Boulevard
 Canastota, NY 13032, USA
 Phone: 315-697-5866
 1-800-554-JUMO
 Fax: 315-697-5867
 E-mail: info@jumo.us
 Internet: www.jumo.us



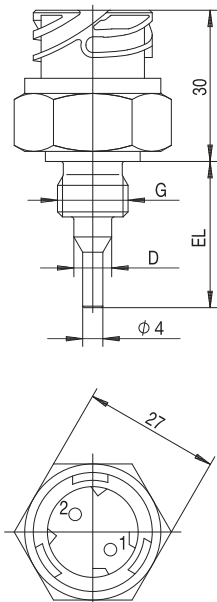
Dimensions



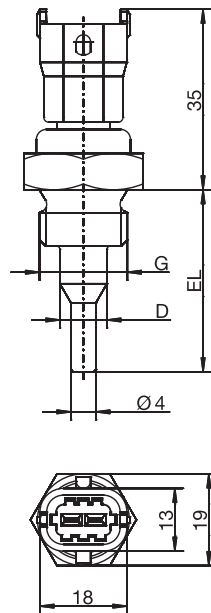
Basic type 902040/10



Basic type 902040/12



Basic type 902040/15



Basic type 902040/17

JUMO GmbH & Co. KG
Delivery address: Mackenrodtstraße 14
36039 Fulda, Germany
Postal address: 36035 Fulda, Germany
Phone: +49 661 6003-0
Fax: +49 661 6003-607
E-mail: mail@jumo.net
Internet: www.jumo.net

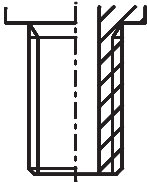
JUMO Instrument Co. Ltd.
JUMO House
Temple Bank, Riverway
Harlow, Essex CM20 2DY, UK
Phone: +44 1279 635533
Fax: +44 1279 635262
E-mail: sales@jumo.co.uk
Internet: www.jumo.co.uk

JUMO Process Control, Inc.
8 Technology Boulevard
Canastota, NY 13032, USA
Phone: 315-697-5866
1-800-554-JUMO
Fax: 315-697-5867
E-mail: info@jumo.us
Internet: www.jumo.us

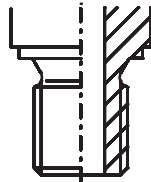


Thread undercuts

Thread run-out
DIN 76-short

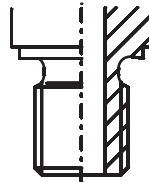


Thread undercut
DIN 3852-Form A



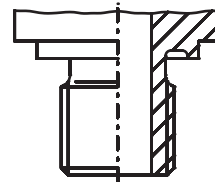
Sealing by means
of a sealing ring

Thread undercut
DIN 3852-Form B



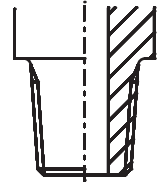
Sealing by means
of a sealing edge

Thread undercut
DIN 3852-Form E



Sealing by means
of a profile sealing ring
DIN 3869

Thread undercut
DIN 3852-Form C



Sealing by means
of a thread

JUMO GmbH & Co. KG
 Delivery address: Mackenrodtstraße 14
 36039 Fulda, Germany
 Postal address: 36035 Fulda, Germany
 Phone: +49 661 6003-0
 Fax: +49 661 6003-607
 E-mail: mail@jumo.net
 Internet: www.jumo.net

JUMO Instrument Co. Ltd.
 JUMO House
 Temple Bank, Riverway
 Harlow, Essex CM20 2DY, UK
 Phone: +44 1279 635533
 Fax: +44 1279 635262
 E-mail: sales@jumo.co.uk
 Internet: www.jumo.co.uk

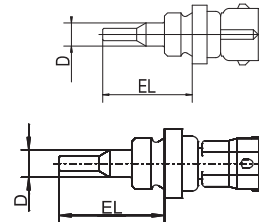
JUMO Process Control, Inc.
 8 Technology Boulevard
 Canastota, NY 13032, USA
 Phone: 315-697-5866
 1-800-554-JUMO
 Fax: 315-697-5867
 E-mail: info@jumo.us
 Internet: www.jumo.us



Order details: Screw-in RTD temperature probe with AMP plug connector or Bosch compact connector 1.1

(1) Basic type

902040/10	Screw-in RTD temperature probe with AMP plug connector (Junior-Power-Timer)
902040/17	Screw-in RTD temperature probe with Bosch compact connector 1.1, 2-pin



(2) Operating temperature in °C	
x x	370 -50 to +150 °C
x	387 -50 to +270 °C (short-term +300 °C)
(3) Measuring insert	
x x	1003 1 x Pt100 in 2-wire circuit
x x	1004 1 x Pt500 in 2-wire circuit
x x	1005 1 x Pt1000 in 2-wire circuit
x x	9999 1 x PTC or NTC temperature probes in 2-wire circuit (specify in plain text)
(4) Tolerance class according to DIN EN 60751	
x x	0 Technical data of PTC or NTC temperature probes
x x	1 Class B (Standard)
x x	2 Class A
(5) Protection tube diameter D in mm	
x x	6 Ø 6 mm (Standard for EL = 60 mm)
x x	7.5 Ø 7.5 mm, stepped down to 4 mm
(6) Fitting length EL in mm	
x x	25 25 mm
x x	26 26 mm
x x	29 29 mm
x x	60 60 mm
(7) Process connection	
x x	102 Screw connection G 1/4
x x	103 Screw connection G 3/8
x x	114 Screw connection M10x1
x x	118 Screw connection M12x1.5
x x	121 Screw connection M14x1.5
x x	141 Screw connection NPTF 1/8"-27
(8) Protection tube material	
x x	20 Stainless steel
x x	46 Brass

Order code	(1)	(2)	(3)	(4)	(5)	(6)	(7)	(8)
Order example	902040/10	- 387	- 1003	- 1	- 6	- 29	- 103	- 20

JUMO GmbH & Co. KG

Delivery address: Mackenrodtstraße 14
36039 Fulda, Germany
Postal address: 36035 Fulda, Germany
Phone: +49 661 6003-0
Fax: +49 661 6003-607
E-mail: mail@jumo.net
Internet: www.jumo.net

JUMO Instrument Co. Ltd.

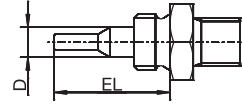
JUMO House
Temple Bank, Riverway
Harlow, Essex CM20 2DY, UK
Phone: +44 1279 635533
Fax: +44 1279 635262
E-mail: sales@jumo.co.uk
Internet: www.jumo.co.uk

JUMO Process Control, Inc.

8 Technology Boulevard
Canastota, NY 13032, USA
Phone: 315-697-5866
1-800-554-JUMO
Fax: 315-697-5867
E-mail: info@jumo.us
Internet: www.jumo.us

**Order details: Screw-in RTD temperature probe with machine connector M12****(1) Basic type**

902040/12 Screw-in RTD temperature probe
with machine connector M12



x	370	(2) Operating temperature in °C -50 to +150 °C
x	1003	(3) Measuring insert 1 x Pt100 in 2-wire circuit
x	1004	1 x Pt500 in 2-wire circuit
x	1005	1 x Pt1000 in 2-wire circuit
x	9999	1 x PTC or NTC temperature probes in 2-wire circuit (specify in plain text)
x	0	(4) Tolerance class according to DIN EN 60751 Technical data of PTC or NTC temperature probes
x	1	Class B (Standard)
x	2	Class A
x	7.5	(5) Protection tube diameter D in mm Ø 7.5 mm, stepped down to 4 mm
x	29	(6) Fitting length EL in mm 29 mm
x	36	36 mm
x	121	(7) Process connection Screw connection M14x1.5
x	141	Screw connection NPTF 1/8"-27
x	542	Screw connection R 3/8 according to DIN EN 10226-1
x	20	(8) Protection tube material Stainless steel
x	46	Brass

Order code	(1)	(2)	(3)	(4)	(5)	(6)	(7)	(8)
Order example	902040/12	- 370	- 1003	- 1	- 7.5	- 36	- 141	- 20

JUMO GmbH & Co. KG
 Delivery address: Mackenrodtstraße 14
 36039 Fulda, Germany
 Postal address: 36035 Fulda, Germany
 Phone: +49 661 6003-0
 Fax: +49 661 6003-607
 E-mail: mail@jumo.net
 Internet: www.jumo.net

JUMO Instrument Co. Ltd.
 JUMO House
 Temple Bank, Riverway
 Harlow, Essex CM20 2DY, UK
 Phone: +44 1279 635533
 Fax: +44 1279 635262
 E-mail: sales@jumo.co.uk
 Internet: www.jumo.co.uk

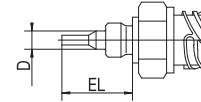
JUMO Process Control, Inc.
 8 Technology Boulevard
 Canastota, NY 13032, USA
 Phone: 315-697-5866
 1-800-554-JUMO
 Fax: 315-697-5867
 E-mail: info@jumo.us
 Internet: www.jumo.us



Order details: Screw-in RTD temperature probe with bayonet connector according to DIN 72585

(1) Basic type

902040/15	Screw-in RTD temperature probe with bayonet connector according to DIN 72585
-----------	--



x	382	(2) Operating temperature in °C -50 to +220 °C
x	1003	(3) Measuring insert 1 x Pt100 in 2-wire circuit
x	1004	1 x Pt500 in 2-wire circuit
x	1005	1 x Pt1000 in 2-wire circuit
x	9999	1 x PTC or NTC temperature probes in 2-wire circuit (specify in plain text)
x	0	(4) Tolerance class according to DIN EN 60751 Technical data of PTC or NTC temperature probes
x	1	Class B (Standard)
x	2	Class A
x	7.5	(5) Protection tube diameter D in mm Ø 7.5 mm, stepped down to 4 mm
x	29	(6) Fitting length EL in mm 29 mm
x	121	(7) Process connection Screw connection M14x1.5
x	20	(8) Protection tube material Stainless steel
x	46	Brass

Order code	(1)	(2)	(3)	(4)	(5)	(6)	(7)	(8)
Order example	902040/15	- 382	- 1003	- 1	- 7.5	- 29	- 121	- 20

Accessories

Coupling set, 6 pieces, Junior-Power-Timer
 Coupling set, 4 pieces, Junior-Power-Timer
 Coupling for basic type 902040/10 with a 2.5 m long connection cable, silicone-insulated
 Coupling for basic type 902040/15

Part no.
 00089930
 00201426
 00308880
 00439715

Stock versions

(1)	(2)	(3)	(4)	(5)	(6)	(7)	(8)	Part no.
902040/10	- 387	- 1003	- 1	- 7.5	- 29	- 121	- 20	00446901
902040/10	- 387	- 1003	- 1	- 7.5	- 29	- 121	- 46	00447301
902040/10	- 387	- 1003	- 1	- 7.5	- 25	- 141	- 20	00446894
902040/10	- 387	- 1003	- 1	- 7.5	- 25	- 141	- 46	00447305
902040/12	- 370	- 1003	- 1	- 7.5	- 29	- 121	- 20	00542501
902040/15	- 382	- 1005	- 1	- 7.5	- 29	- 121	- 46	00487533
902040/17	- 370	- 1003	- 1	- 7.5	- 29	- 121	- 20	00537629